

**Product data**

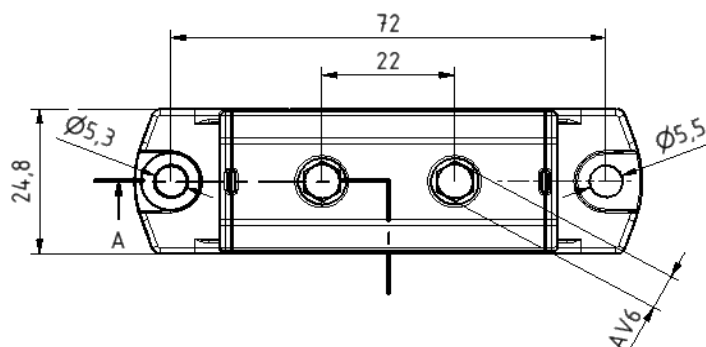
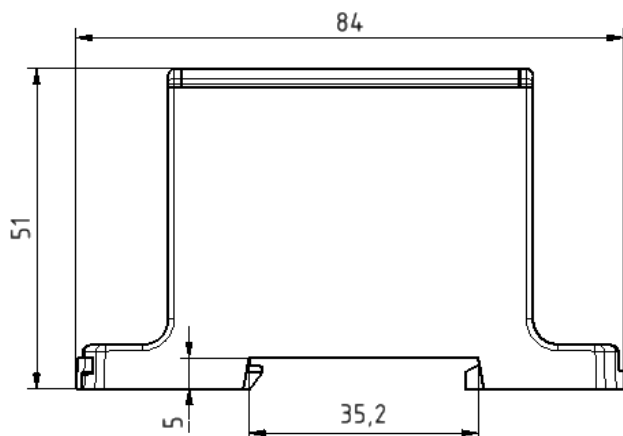
|              |  |          |                |          |                      |
|--------------|--|----------|----------------|----------|----------------------|
| Product code | <b>VC05-0050</b>                                 | STK-code | <b>1914113</b> | EAN-code | <b>6410019141139</b> |
| Product name | OTL-connector 1xAl/Cu 6-95mm <sup>2</sup> (Blue) |          |                |          |                      |
| Wires        | 1xAl/Cu 6-95mm <sup>2</sup>                      |          |                |          |                      |

**Technical data**

|                            |   |             |                 |
|----------------------------|---|-------------|-----------------|
| Nominal current            | Cu                                      | <b>245</b>  | A               |
|                            | Al                                      | <b>220</b>  | A               |
| Nominal voltage            |   | <b>690</b>  | V               |
| Max. Current (US)          | Cu                                      | -           | A               |
|                            | Al                                      | -           | A               |
| Max. Voltage (US)          |   | -           | V               |
| Number of pole             |   | <b>1</b>    | pcs             |
| Max. Cross section         |   | <b>95</b>   | mm <sup>2</sup> |
| Tightening torque          | 6-25 mm <sup>2</sup>                    | <b>12</b>   | Nm              |
|                            | 35-95 mm <sup>2</sup>                   | <b>22</b>   | Nm              |
|                            | -                                       | -           | Nm              |
|                            | -                                       | -           | Nm              |
| Max. Operating temperature |   | <b>80</b>   | °C              |
| Weight                     |   | <b>65</b>   | g               |
| IP-protection              |   | <b>IP20</b> |                 |
| Standards                  | <b>EN 61238-1; EN60947-7-1</b>          |             |                 |
| Color/ Material            | <b>Blue RAL 5015/ PA66</b>              |             |                 |
| Mounting/ Connection       | <b>DIN-rail and screw (M5) mounting</b> |             |                 |


**Description**

OTL-connectors are designed to be used connecting and branching aluminium and copper conductors. Bodies are made of tin-plated aluminium.

**Drawing**

**Package**

|             |            |              |            |             |             |
|-------------|------------|--------------|------------|-------------|-------------|
| Package     | <b>Box</b> | pcs/ package | <b>10</b>  | Weight [Kg] | <b>0,75</b> |
| Length [mm] | <b>120</b> | Width [mm]   | <b>130</b> | Height [mm] | <b>100</b>  |

| Product data |  |          |          |       |              |              |           |
|--------------|--|----------|----------|-------|--------------|--------------|-----------|
| Product code | Product name   | $I_n$ Al | $I_n$ Cu | $U_n$ | $I_{max}$ Al | $I_{max}$ Cu | $U_{max}$ |
| VC05-0019    | OTL-connector 1xAl/Cu 6-95mm <sup>2</sup> (Grey)         | 220 A    | 245 A    | 690 V | -            | -            | -         |
| VC05-0050    | OTL-connector 1xAl/Cu 6-95mm <sup>2</sup> (Blue)         | 220 A    | 245 A    | 690 V | -            | -            | -         |
| VC05-0051    | OTL-connector 1xAl/Cu 6-95mm <sup>2</sup> (Yellow/Green) | 220 A    | 245 A    | 690 V | -            | -            | -         |
| VC05-0144    | OTL-connector 1xAl/Cu 6-95mm <sup>2</sup> (Red)          | 220 A    | 245 A    | 690 V | -            | -            | -         |
| VC05-0145    | OTL-connector 1xAl/Cu 6-95mm <sup>2</sup> (Black)        | 220 A    | 245 A    | 690 V | -            | -            | -         |

| Installation |                                  |
|--------------|----------------------------------|
| Type         | DIN-rail and screw (M5) mounting |


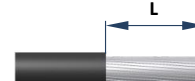


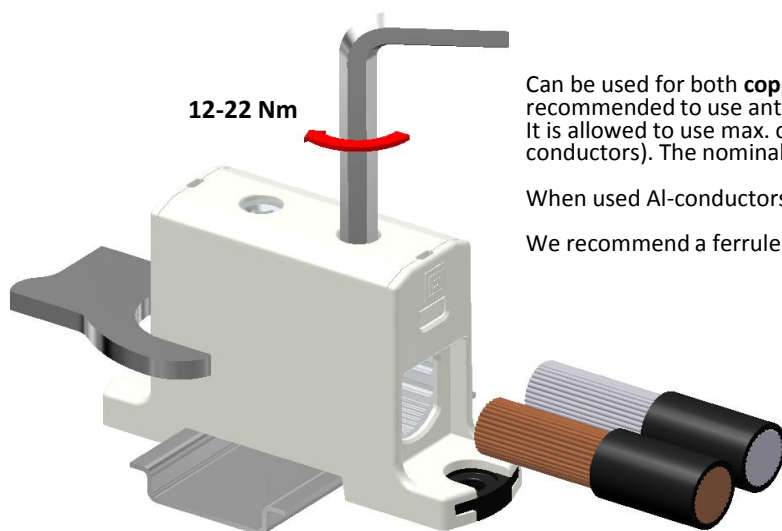
**DIN-rail mounting**  
Set the connector to DIN-rail.  
See picture. Push until "click"  
**Removing**  
Release the slider and lift connector



**Screw mounting**  
Use max. Ø5 mm screw.  
See picture .



| Connection  |        |     |                   |                         |                    |                    |   |       |
|---|--------|-----|-------------------|-------------------------|--------------------|--------------------|---|-------|
| <div>Screw</div> <div></div> | Thread | M14 | Tightening torque | 6-25 mm <sup>2</sup>    | 12 Nm              | Stripping lenght L |  | 20 mm |
|   | SW     | 6   |                   | 35-95 mm <sup>2</sup>   | 22 Nm              |                    |   |       |
|   |        |     |                   | -                       | -                  |                    |   |       |
|   |        |     |                   | -                       | -                  |                    |   |       |
|   |        |     |                   | Max. Wire cross section | 95 mm <sup>2</sup> |                    |   |       |



## Installation

Can be used for both **copper- or aluminium conductors**. With the Al-conductors, It's recommended to use anti-corrosion paste. (i.e. Penetrox).  
It is allowed to use max. of three adjacent cross-sections in one space (Copper conductors). The nominal max. cross-section value must not be exceeded.

When used Al-conductors, it is allowed to use only one conductor/ one space.

We recommend a ferrule when using a fine-stranded conductor.

Each protective conductor must have their own conductor space. SFS 6000:1999 clause 810.2.6

| Cross-section of conductors and number of conductors/ space. (Al-conductors in parenthesis) |                     |                   |                    |                    |                     |                     |                     |  |                     |
|---|---------------------|-------------------|--------------------|--------------------|---------------------|---------------------|---------------------|--|---------------------|
| 1,5 mm <sup>2</sup>   | 2,5 mm <sup>2</sup> | 6 mm <sup>2</sup> | 10 mm <sup>2</sup> | 16 mm <sup>2</sup> | 25 mm <sup>2</sup>  | 35 mm <sup>2</sup>  | 50 mm <sup>2</sup>  | The conductors number on table refer only to industrially installed terminals. |                     |
| 0   | 0                   | 3 (1)             | 3 (1)              | 3 (1)              | 3 (1)               | 2 (1)               | 1 (1)               |  |                     |
|   |                     |                   | 70 mm <sup>2</sup> | 95 mm <sup>2</sup> | 120 mm <sup>2</sup> | 150 mm <sup>2</sup> | 185 mm <sup>2</sup> | 240 mm <sup>2</sup>  | 300 mm <sup>2</sup> |
|   |                     |                   | 1 (1)              | 1 (1)              | 0                   | 0                   | 0                   | 0  | 0                   |