

Product data

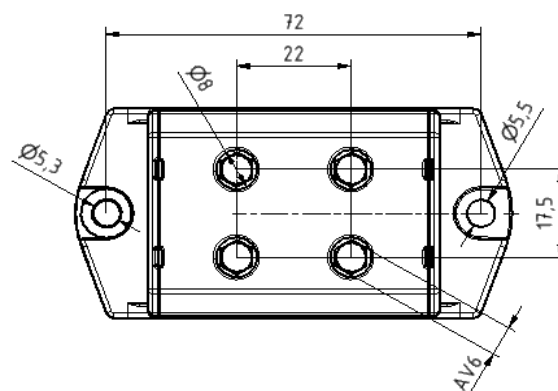
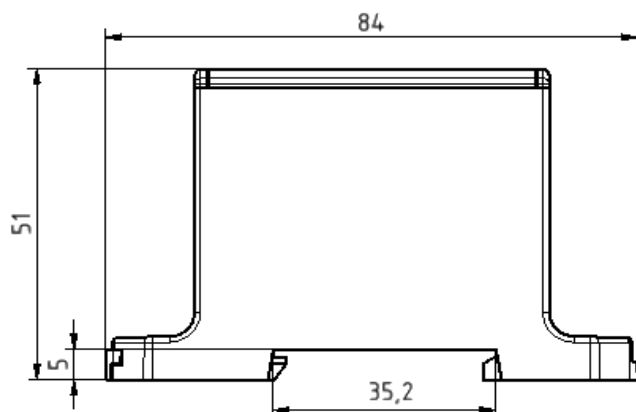
Product code	VC05-0042	STK-code	1914115	EAN-code	6410019141153
Product name	OTL-connector 2xAl/Cu 6-95mm ² (Grey)				
Wires	2xAl/Cu 6-95mm ²				

Technical data

Nominal current	Cu	490	A
	Al	440	A
Nominal voltage		690	V
Max. Current (US)	Cu	-	A
	Al	-	A
Max. Voltage (US)		-	V
Number of pole		1	pcs
Max. Cross section		2x95	mm ²
Tightening torque	6-25 mm ²	12	Nm
	35-95 mm ²	22	Nm
	-	-	Nm
	-	-	Nm
Max. Operating temperature		80	°C
Weight		125	g
IP-protection		IP20	
Standards	EN 61238-1; EN60947-7-1		
Color/ Material	Grey RAL 7035/ PA66		
Mounting/ Connection	DIN-rail and screw (M5) mounting		


Description

OTL-connectors are designed to be used connecting and branching aluminium and copper conductors. Bodies are made of tin-plated aluminium.

Drawing

Package

Package	Box	pcs/ package	30	Weight [Kg]	3,55
Length [mm]	300	Width [mm]	205	Height [mm]	100

Product data							
Product code	Product name	I_n Al	I_n Cu	U_n	I_{max} Al	I_{max} Cu	U_{max}
VC05-0042	OTL-connector 2xAl/Cu 6-95mm ² (Grey)	440 A	490 A	690 V	-	-	-
VC05-0043	OTL-connector 2xAl/Cu 6-95mm ² (Blue)	440 A	490 A	690 V	-	-	-
VC05-0044	OTL-connector 2xAl/Cu 6-95mm ² (Yellow/Green)	440 A	490 A	690 V	-	-	-
VC05-0148	OTL-connector 2xAl/Cu 6-95mm ² (Red)	440 A	490 A	690 V	-	-	-
VC05-0149	OTL-connector 2xAl/Cu 6-95mm ² (Black)	440 A	490 A	690 V	-	-	-

Installation	
Type	DIN-rail and screw (M5) mounting


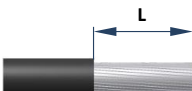


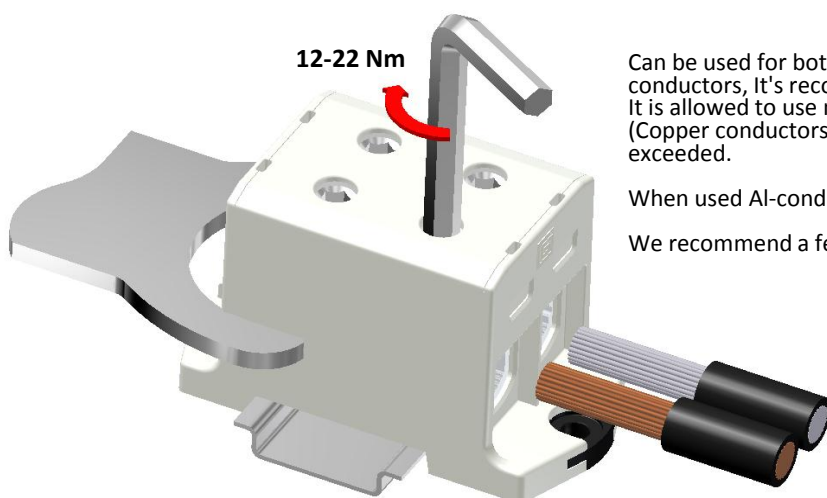
DIN-rail mounting
Set the connector to DIN-rail.
See picture. Push until "click"
Removing
Release the slider and lift connector



Screw mounting
Use max. Ø5 mm screw.
See picture .



Connection							
<div>Screw</div> <div></div>	Thread	M14	Tightening torque	6-25 mm ²	12 Nm	Stripping lenght L	 <div>20 mm</div>
	SW	6		35-95 mm ²	22 Nm		
				-	-		
				-	-		
				Max. Wire cross section	95 mm ²		



Installation

Can be used for both **copper- or aluminium conductors**. With the Al-conductors, It's recommended to use anti-corrosion paste. (i.e. Penetrox). It is allowed to use max. of three adjacent cross-sections in one space (Copper conductors). The nominal max. cross-section value must not be exceeded.

When used Al-conductors, it is allowed to use only one conductor/ one space.

We recommend a ferrule when using a fine-stranded conductor.

Each protective conductor must have their own conductor space. SFS 6000:1999 clause 810.2.6

Cross-section of conductors and number of conductors/ space. (Al-conductors in parenthesis)									
1,5 mm ²	2,5 mm ²	6 mm ²	10 mm ²	16 mm ²	25 mm ²	35 mm ²	50 mm ²	The conductors number on table refer only to industrially installed terminals.	
0	0	3 (1)	3 (1)	3 (1)	3 (1)	2 (1)	1 (1)		
			70 mm ²	95 mm ²	120 mm ²	150 mm ²	185 mm ²	240 mm ²	300 mm ²
			1 (1)	1 (1)	0	0	0	0	0

Product data							
Product code	Product name	I_n Al	I_n Cu	U_n	I_{max} Al	I_{max} Cu	U_{max}
VC05-0042	OTL-connector 2xAl/Cu 6-95mm ² (Grey)	440 A	490 A	690 V	-	-	-
VC05-0043	OTL-connector 2xAl/Cu 6-95mm ² (Blue)	440 A	490 A	690 V	-	-	-
VC05-0044	OTL-connector 2xAl/Cu 6-95mm ² (Yellow/Green)	440 A	490 A	690 V	-	-	-
VC05-0148	OTL-connector 2xAl/Cu 6-95mm ² (Red)	440 A	490 A	690 V	-	-	-
VC05-0149	OTL-connector 2xAl/Cu 6-95mm ² (Black)	440 A	490 A	690 V	-	-	-

Installation	
Type	DIN-rail and screw (M5) mounting


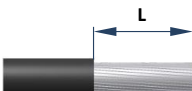


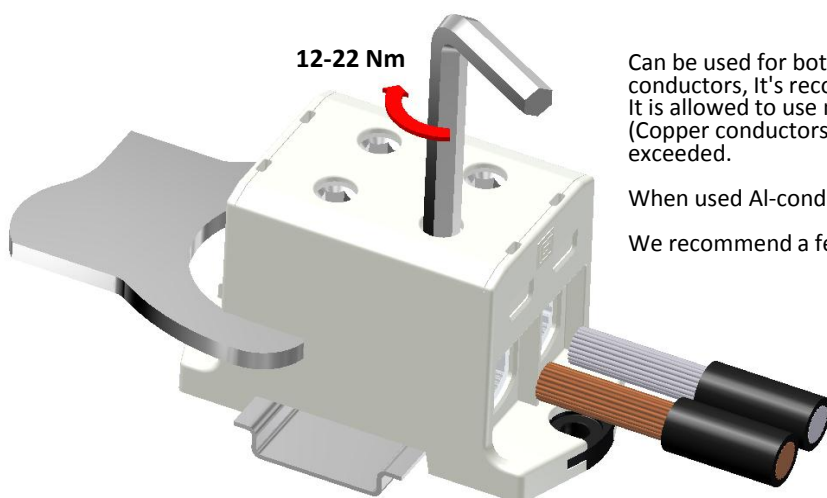
DIN-rail mounting
Set the connector to DIN-rail.
See picture. Push until "click"
Removing
Release the slider and lift connector



Screw mounting
Use max. Ø5 mm screw.
See picture .



Connection							
<div>Screw</div> <div></div>	Thread	M14	Tightening torque	6-25 mm ²	12 Nm	Stripping lenght L	 <div>20 mm</div>
	SW	6		35-95 mm ²	22 Nm		
				-	-		
				-	-		
				Max. Wire cross section	95 mm ²		



Installation

Can be used for both **copper- or aluminium conductors**. With the Al-conductors, It's recommended to use anti-corrosion paste. (i.e. Penetrox). It is allowed to use max. of three adjacent cross-sections in one space (Copper conductors). The nominal max. cross-section value must not be exceeded.

When used Al-conductors, it is allowed to use only one conductor/ one space.

We recommend a ferrule when using a fine-stranded conductor.

Each protective conductor must have their own conductor space. SFS 6000:1999 clause 810.2.6

Cross-section of conductors and number of conductors/ space. (Al-conductors in parenthesis)									
1,5 mm ²	2,5 mm ²	6 mm ²	10 mm ²	16 mm ²	25 mm ²	35 mm ²	50 mm ²	The conductors number on table refer only to industrially installed terminals.	
0	0	3 (1)	3 (1)	3 (1)	3 (1)	2 (1)	1 (1)		
			70 mm ²	95 mm ²	120 mm ²	150 mm ²	185 mm ²	240 mm ²	300 mm ²
			1 (1)	1 (1)	0	0	0	0	0