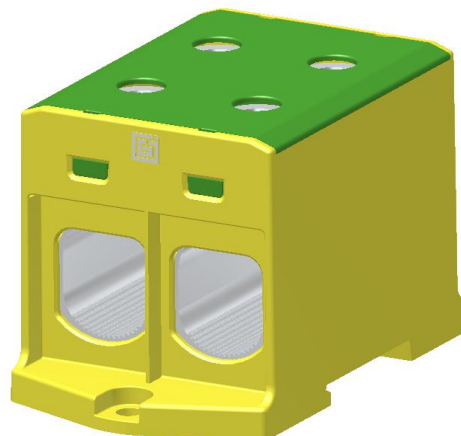


Product data

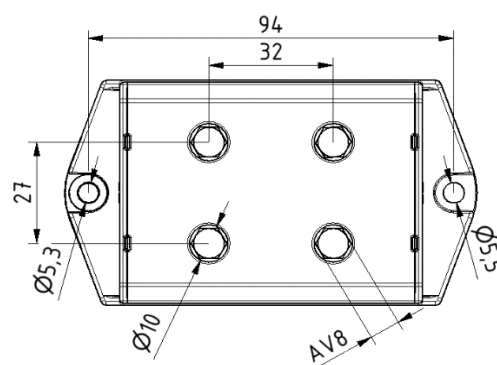
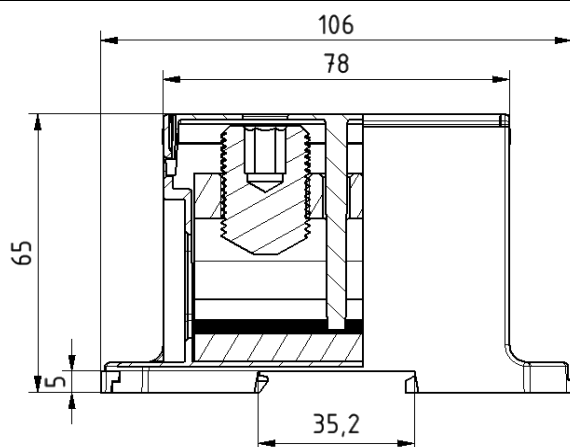
Product code	VC05-0039	STK-code	1914135	EAN-code	6410019141351
Product name	OTL-connector 2xAl/Cu 240mm ² (Yellow/Green)				
Wires	2xAl/Cu 240mm ²				

Technical data

Nominal current	Cu	850	A
	Al	760	A
Nominal voltage		690	V
Max. Current (US)	Cu	-	A
	Al	-	A
Max. Voltage (US)		-	V
Number of pole		1	pcs
Max. Cross section		2x240	mm ²
Tightening torque	35-120 mm ²	26	Nm
	150-240 mm ²	40	Nm
	-	-	Nm
	-	-	Nm
Max. Operating temperature		80	°C
Weight		340	g
IP-protection		IP20	
Standards	EN 61238-1; EN60947-7-1		
Color/ Material	Green RAL 6018, Yellow RAL 1016/ PA66		
Mounting/ Connection	DIN-rail and screw (M5) mounting		


Description

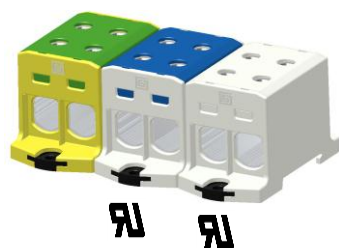
OTL-connectors are designed to be used connecting and branching aluminium and copper conductors. Bodies are made of tin-plated aluminium.

Drawing

Package

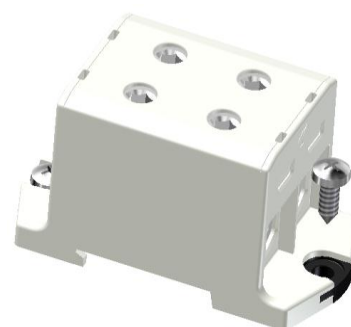
Package	Box	pcs/ package	3	Weight [Kg]	1,00
Length [mm]	210	Width [mm]	155	Height [mm]	105

Product data							
Product code	Product name	I_n Al	I_n Cu	U_n	I_{max} Al	I_{max} Cu	U_{max}
VC05-0037	OTL-connector 2xAl/Cu 240mm ² (Grey)	760 A	850 A	690 V	620 A	760 A	600 V
VC05-0038	OTL-connector 2xAl/Cu 240mm ² (Blue)	760 A	850 A	690 V	620 A	760 A	600 V
VC05-0039	OTL-connector 2xAl/Cu 240mm ² (Yellow/Green)	760 A	850 A	690 V	-	-	-

Installation	
Type	DIN-rail and screw (M5) mounting


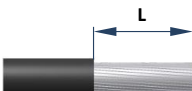


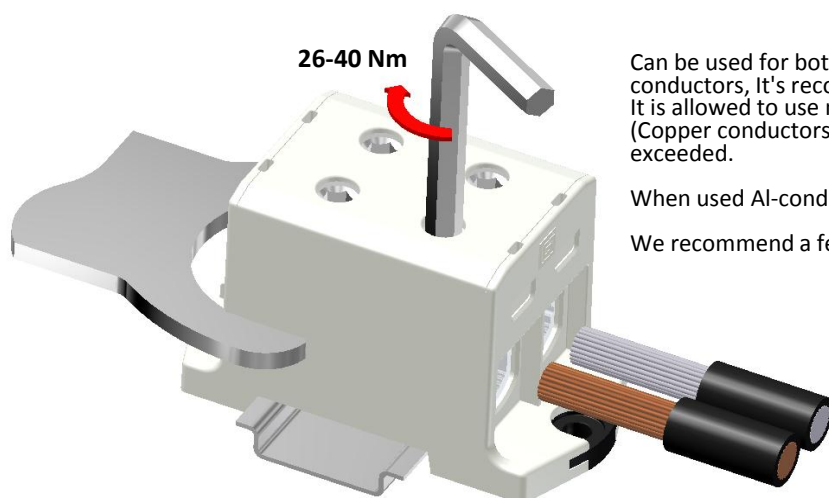
DIN-rail mounting
Set the connector to DIN-rail.
See picture. Push until "click"
Removing
Release the slider and lift connector



Screw mounting
Use max. Ø5 mm screw.
See picture .



Connection							
Screw 	Thread	M20	Tightening torque	35-120 mm²	26 Nm	Stripping lenght L 	30 mm
	SW	8		150-240 mm²	40 Nm		
				-	-		
				-	-		
				Max. Wire cross section	240 mm²		



Installation

Can be used for both **copper- or aluminium conductors**. With the Al-conductors, It's recommended to use anti-corrosion paste. (i.e. Penetrox). It is allowed to use max. of three adjacent cross-sections in one space (Copper conductors). The nominal max. cross-section value must not be exceeded.

When used Al-conductors, it is allowed to use only one conductor/ one space.

We recommend a ferrule when using a fine-stranded conductor.

Each protective conductor must have their own conductor space. SFS 6000:1999 clause 810.2.6

Cross-section of conductors and number of conductors/ space. (Al-conductors in parenthesis)									
1,5 mm ²	2,5 mm ²	6 mm ²	10 mm ²	16 mm ²	25 mm ²	35 mm ²	50 mm ²	The conductors number on table refer only to industrially installed terminals.	
0	0	0	0	0	0	3 (1)	3 (1)		
			70 mm ²	95 mm ²	120 mm ²	150 mm ²	185 mm ²	240 mm ²	300 mm ²
			3 (1)	2 (1)	2 (1)	1 (1)	1 (1)	1 (1)	0